



Agro-Climatic Resilience in Semi-Arid Landscapes Project (ACReSAL)

Key Project Data

Project Short Title	ACReSAL
Project ID	P175237
Total Amount	(IDA) USD 700 Million
Board Approval	December 2021
Effectiveness Date	9 th June 2022
First Disbursement	27 th October 2022
Closing Date	March 2028
Borrower	FGN (Federal Ministry of Finance)
Implementing Agencies	Federal Ministry of Environment Federal Ministry of Water Resources Federal Ministry of Agriculture and Rural Development
Task Team Leaders	Joy Iganya Agene, Manievel Sene and Emmanuel Chinedu Umolu
Participating States	19 Northern States and Federal Capital Territory (FCT)

Project's Characteristics

**Focus on Agro-climatic
resilience in Semi-Arid
Landscapes in Nigeria**

**Building on National and
Global Best Practices
(technology, institutional,
and result based
implementation
strategies)**

**Foundation for a
longer-term
national program**

**Multi-sectoral (Environment,
Agriculture, Water) &
Multi-institutional at
Multi-level (National, State,
LGAs & Community)**

**Transformational
& sustainable
impact at scale**

**Integral to FGN's objective
of restoring 1 million hectares
of degraded land -out of the
4 million hectares target
set for broader landscape
restoration by 2030**

Project's Description and Structure

Project Development Objective: To increase the implementation of sustainable landscape management practices in targeted watersheds in northern Nigeria and strengthen Nigeria's long-term enabling environment for integrated climate-resilient landscape management

Components:

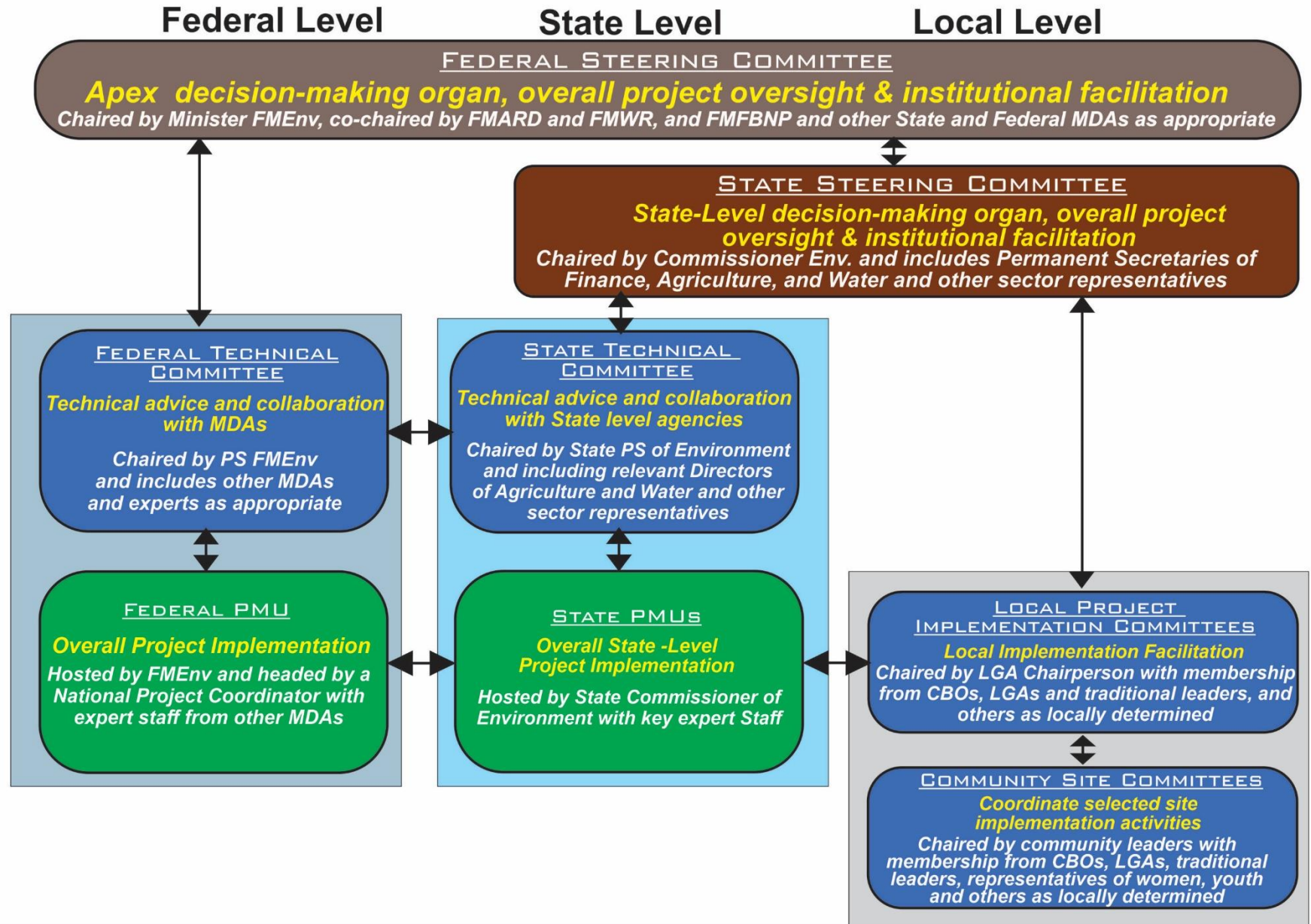
- A. Dryland Management
- B. Community Climate Resilience
- C. Institutional Strengthening & Project Management
- D. Contingency Emergency Response Component (CERC): This component could be used as necessary to provide immediate support to an eligible crisis or emergency**

Project Goals



- Reducing land degradation, erosion and increasing vegetation cover;
- Improving agricultural productivity;
- Increasing availability and access to water;
- Improving pasture management and nomadic grazing practices; and
- Improve farm and non-farm livelihoods to broaden economic activity, particularly for women and vulnerable groups, and reduce the community's dependency on, and inappropriate use of natural resources.

INSTITUTIONAL ARRANGEMENT





THE FEDERAL PROJECT MANAGEMENT UNIT (FPMU)

The Federal Project Management Unit (FPMU) is headed by the **National Project Coordinator**. The FPMU coordinates the Project and facilitates delivery of services and activities carried out by State PMUs.

The Federal Project Management Unit is responsible for overall Project coordination, alignment of Project intervention activities, approach and oversight of activities taking place across participating States and Federal MDAs. Specific roles of the FPMU include the following:

- Act as Secretariat to the Federal Steering Committee
- Act as Secretariat to the Federal Technical Committee;
- Manage and oversee the procurement process for Federal Procurement of Goods, Works and services;
- Support, advise and supervise State PMUs on environmental and social risks analysis, mitigation and management plans and on overall environmental and social issues including but not limited to gender based violence, sexual exploitation and labour influx;
- Support, advise and supervise State PMUs on the process of Livelihood Enhancement/Alternative Activities and Plans
- Project Monitoring and Evaluation (M&E);
- Project communications and advocacy.

STATE PMUs



- The State Project Management Units (SPMUs) are headed by **State Project Coordinators (SPCs)**. They coordinate the State level activities of the Project and the delivery of services.
- Acting as Secretariat to the State Steering Committee.
- Acting as Secretariat to the State Technical Committee.
- Managing the procurement of goods, works, consultancies and non-consultancy services at the State level including civil works.
- Ensuring the development of sound environmental and social risks analysis of sub-projects and ensuring that appropriate mitigation/management plans (ESIAs, ESMPs, RAPs) are prepared, reviewed, cleared, disclosed and implemented according to national laws and relevant World Bank policies.
- Ensuring that all livelihood enhancement analysis are properly conducted and that plans/activities (LNA) put in place are environmentally sound and in line with the PDO.
- Supervising consultancies for State and sub-State level activities (with lead MDAs).

LOCAL GOVERNMENT PROJECT MANAGEMENT IMPLEMENTATION COMMITTEE (LGPMC) - RESPONSIBILITIES



- Acts as liaison to their SPMU and MDAs.
- Provide support to stakeholder analysis and identification for implementation activities.
- Support the implementation of the Watershed Management Strategies.
- Support disclosure and dissemination of Watershed Plan.
- Report to the SPMU on the LGA's progress towards meeting intervention targets.
- Supervise maintenance of intervention works.

COMMUNITY SITE COMMITTEES - RESPONSIBILITIES

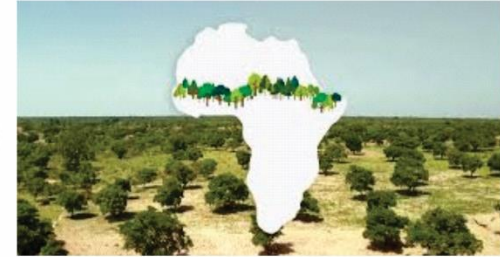


- Community sensitization and social mobilization.
- Assisting communities engage in meaningful participatory watershed planning and implementation.
- Identification, selection and implementation of vegetative land management sub-projects.
- Supporting project to identify, select and implement livelihood sub-projects.
- Mobilization of cooperative labour for works.
- Developing community-owned processes for identifying and resolving conflict.
- Recruitment of a local facilitator from within the selected community.
- Identifying training needs and organizing training events.
- Providing support to the project for participatory monitoring.
- Participate in ensuring adequate and timely resolution of grievances of PAPs.
- Ensures that social values are not interfered with.

Note: include Operations and Maintenance Committee in Site Committees

COMPONENT A

Dryland Management - This component aims to address the drivers of watershed degradation in the targeted areas of northern Nigeria. It will support the following sub-components. This component will target the highest priority large-scale public investments. Component A investments complement those of Component B which is community-based.



A1: Strategic Watershed Planning

- Integrated approaches (Policy & Institutional Environment) – including knowledge base/analytics & project-related policy innovations
- Strategic Watershed Planning (analytical & stakeholder inputs)



A2: Landscape Investments

- Large area watershed investments (including afforestation, windbreaks, sand dunes, etc.)
- Rehabilitation of deep gullies, dams, other infrastructure
- State-level program enhancement



A3: Special Ecosystems

- Forests and Protected Area management
- Oases
- Wetlands
- Woodlands



Milestones Achieved



Activities of land restoration have commenced: 1500 hectares restored - Target is to restore 1 Million hectares



TOR for the development of 20 Strategic Watershed Management Plans, evaluations concluded



Pool of Engineering Expert Advisors engaged (Dam Water and Hydrology, GIS, Agriculture Expert Advisors).



Project is expected to add 53 Million Cubic Meters of total water storage - Dams (among others) will be one of the highpoints to achieve this, covering major aspects of irrigation



Investment staging exercises carried out, investment plans assessed to determine State contributions to the Project.

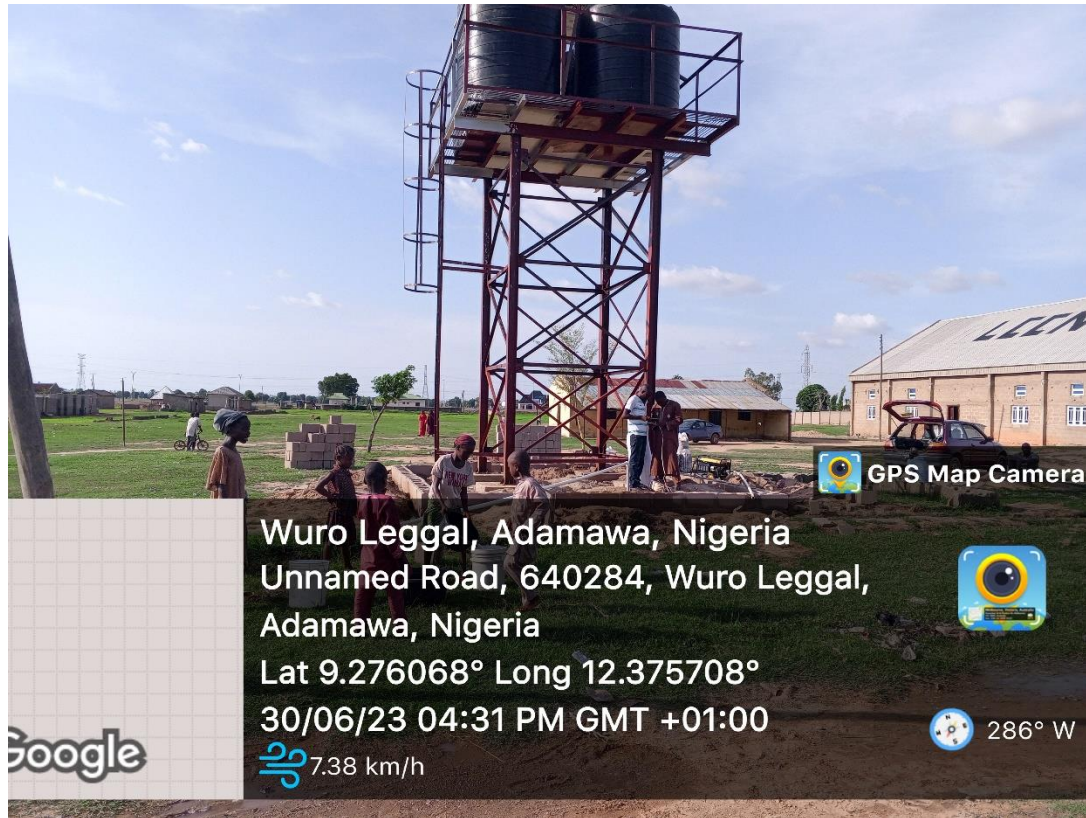


Validated respective Bill of Engineering Measurement and Evaluation (BEME)



A draft TOR for Ecosystem Restoration of Wetland has been reviewed and forwarded to the Bank

Provision of potable water supply



AFFORESTATION ACTIVITIES



Tree Planting

AFFORESTATION ACTIVITIES



Preparation of Nursery Beds

Component B

Community Climate Resilience - This Component seeks to improve agro-climatic resilience at the community level in targeted micro-watersheds. It will support the following sub-components:

B1: Community Strengthening

- Community Engagement/ Social Cohesion/ Peacebuilding
- Capacity building
- Micro-watershed planning

B2: Community Investments

- Activities in local catchments (soil and water management, agricultural systems)
- Community-level infrastructure (incl. solar irrigation) and services
- Climate and Weather Information Services
- Community-level Innovations (e.g. rural energy, village kiosks, innovation pilots) with scale-up potential







Milestones Achieved

- States have conducted several community engagement sessions - improving community ownership, enhancing social cohesion, peace building.
- 96,529 beneficiaries, 44,992 are women (representing 47%). Benefits ranging from sensitization, solar boreholes installed (providing access to water for agricultural and domestic purposes), distribution of clean cook stoves, e.t.c
- Project target is to achieve 3.4 Million beneficiaries.
- 130 Community Interest Groups formed across States - trained in several forms of capacity enhancement such as funds management, climate change adaptation, waste management, e.t.c.
- Community Revolving Fund (CRF) Handbook developed in-house, to guide the implementation of CRF;

Milestones Achievedcontinued

- Farmer-led Irrigation Development (FLID) Manual developed, FLID Workshop took place;
- Engagement of FAO on Landscape Restoration has been finalized;
- All SPMUs have concluded the engagements of Focal NGOs for the implementation of the Project
- Micro-Watersheds delineation in collaboration with NCRS has been accomplished
- Training on Gender-Based Violence (GBV), Grievance Redress Mechanism (GRM), and Conflict Management has been conducted - group dynamics, conflict resolution, GBV, this knowledge is expected to be cascaded to the communities.

COMPONENT C

Institutional Strengthening and Project Management - This Component aims to improve the enabling institutional and policy foundation for multi-sectoral integrated landscape management as well as support project management. This will include the following sub-components:



C1: Institutional and Policy Strengthening

- Institutional Infrastructure (IT, office, connectivity)
- Longer-term policy and institutional frameworks to promote integrated watershed management across sectors, levels and institutions
- Capacity building and outreach (in-person and virtual training, internships)



C2: Project Management

- Coordination at federal and state levels
- Supporting technical assistance (e.g. M&E, data/analytics, implementation support)





ACReSAL

**Agro-Climatic Resilience
in Semi-Arid Landscapes**

"...greening the environment, saving lives"

Thank you!

Abdulhamid Umar
National Project Coordinator
ACReSAL